

## PRODUCT CATALOGUE





## About us

Our company was established in 1987. The company was privatized in 1996 and currently the ownership is entirely private. For this period of activity, the company proved its positions among the most successful factories in Bulgaria and became a national leader in manufacturing and sales of electric and gas household appliances, having an over 70% market share of water heaters in the country.

There are 430 high qualified people working at the company. The total area of our four production facilities is 42,000 sq. m, 29,000 sq. m of which are covered production and storage areas. The factory is situated in the city industrial area of Varna, the sea capital of Bulgaria. The close proximity to an airport, sea port and a highway ensures fast transport communications.

We are the largest independent manufacturer with the widest assortment of electric water heaters in Central and Eastern Europe, which contains more than 250 models and modifications of the following water heaters:

- ◆ Storage water heaters, pressure operating from 5 up to 1000 l, with enameled or stainless steel water tank, for vertical or horizontal mounting;
- ◆ Highly energy efficient storage water heaters from 80 up to 1000 liters combined with heat exchangers, which can be connected to alternative energy sources such as thermal pumps, solar collectors, gas and central / local heating systems;
- ◆ Instant water heaters for kitchen, bathroom and combined;
- ◆ Entirely stainless steel water heaters applicable for the marine industry (boats).

It was **ELDOMINVEST** who created the first Bulgarian cookers and inbuilt cook tops with a glass-ceramic top:

- ◆ Electrical **Class A for energy efficiency**;
- ◆ Combined type on gas and electricity;
- ◆ Models, operating entirely on gas.

Our annual production capacity is over 500 000 appliances. All our products are marked and certified according to the requirements of specific local regulations in the states where we are exporting.

Until now more than 1 800 000 households in Europe, the Near East and the USA have chosen appliances manufactured by ELDOMINVEST.





## Contents

Eldom Favourite Line. Electrical water heaters for wall mounting .....	4 - 7
Eldom Smart Line. Electrical water heaters with microprocessing control for wall mounting .....	8 - 9
Eldom Idea Line. Electrical water heaters for wall mounting .....	10 - 13
Eldom VIP Line. Electrical water heaters with micro processing control for vertical assembly .....	14 - 15
Eldom Energy Line. Combined water heaters for wall mounting .....	16 - 20
Buffer tanks .....	21
Eldom Titan Line. Floor standing electrical and combined water heaters .....	22 - 26
Multifunctional electronic control .....	27 - 29
Flat plate solar collectors with selective coating and limited heat losses .....	30 - 31
Solar thermal vacuum tube collectors with triple layer selective covering and compound parabolic concentrators .....	32 - 33
Eldom Favourite Mini Line. Small capacity water heaters .....	34
Eldom Idea Mini Line. Small capacity water heaters .....	35
Eldom Beta Line. Instantaneous water heaters .....	36 - 37
Eldom Alpha Line. Instantaneous water heaters .....	38 - 39
Cookers .....	40 - 41
Built-in cooktops .....	42 - 43
Electrical tubular heating elements .....	44 - 45
Technological opportunities of ELDOMINVEST .....	46
Standards and certificates .....	47

*Eldom*  
FAVOURITE

Your FAVOURITE classical style



The core FAVOURITE range includes the most popular electrical water heaters of Eldominvest - the ones with the classic round shape. The FAVOURITE water heaters are with capacity from 30 up to 200 liters. They are safe and user friendly, providing sanitary hot water for households with one or more consumers. The stylish classic outlook in a combination with all advantages of high technologies and the competitive purchase price make the FAVOURITE water heaters preferable already for 2 decades in a big number of homes.



## ADVANTAGES:

- ☑ **We offer a big variety of different models: The products are designed in a wide range, fulfilling the demand and the preferences of consumers: with volume of 30l, 50l, 80l (φ385 and φ460), 100l, 120l, 150l (φ460mm and φ585mm) and 200l; for horizontal or vertical assembly, with enameled or stainless steel water container.**
- ☑ **Insulation of directly injected environment friendly Freon free polyurethane. The laboratory tests of FAVOURITE water heaters are showing heat losses lower than the norms according to SAVE program of the EU.**

Volume [litres]	Eldominvest water heaters' heat losses [kWh/24h]	Heat losses [kWh/24h] as per the regulations of the SAVE programme
30	0.68	0.85
50	0.86	1.13
80(φ 385mm)	1.10	1.47
80(φ 460mm)	1.01	1.47
120	1.35	1.84
150	1.11	2.10
200	1.50	2.55

- ☑ **Specialy designed „4-level Protection” used by Eldominvest, which assures and is a guarantee for actual reliability and safety of the water heater.**
- ☑ **Water tanks with special enameled covering: In this way we guarantee high hygiene of the hot water and its suitability for preparing of food and for drinking.**
- ☑ **Cathode corrosion protection: All models of FAVOURITE enameled water heaters have double cathode protection assured trough protectors made of special Magnesium alloy.**
- ☑ **We have foreseen an option for inbuilt anode tester in order to be able to trace the wear rate of the protector.**
- ☑ **Water tanks from acid resistant stainless steel, grade 316L.**
- ☑ **Heating elements with long life-time manufactured at Eldominvest on a state-of-the-art production line.** Same have been designed particularly for these types of water heaters. According to special clients' requirements there is an option for the water heaters to be produced also with ceramic heating elements.
- ☑ **Multifunctional valve**, manufactured from special PBT plastics (poly-butylenes- teraftalates) that keeps the lime stone away. This combined valve provides three functions at the same time:
  - of a safety valve - does not allow the water pressure's increase inside the water tank above set limits;
  - of a return valve - in case of dropping down the pressure inside the main water mains. The valve does not allow a water drain of the water heater;
  - of a differential valve - compensates the pressure differences.
- ☑ **Illuminated switch.**
- ☑ **Temperature indicator.**
- ☑ **External thermo-regulator.**
- ☑ **We are manufacturing the FAVOURITE models under a triple 100 percent quality control: all production processes are entirely controlled but besides that we perform also two pressure tests and one for the electrical part safety. Every single water heater coming down the production lines passes all these tests.**





**Models for vertical assembly**  
**with volume of 30l, 50l, 80l (φ385mm and φ460mm), 100l, 120l, 150l (φ460mm and φ585mm) and 200l.**



Low heat losses



Four-level protection



Double cathode protection



Drinking water



Combined return safety valve



Option for assembly of anode tester



Environment friendly Freon free Polyurethane

Eldom Favourite		For vertical wall installation								
Model	enamelled water tank	72269	72267	72265	72268	72270	72266	72280M	72280	72281
number	stainless steel water tank	72269H	72267H	72265H	72268H	72270H	72266H	72280MH	72280H	72281H
Rated volume [l]		30	50	80	80	100	120	150	150	200
Rated voltage [V]		220-230 V~								
Rated power [kW]		1,5 / 2 / 3						2 / 3		
Rated pressure [MPa]		0,6								
Heat losses [kWh/24h]		0,68	0,86	1,01	1,1	-	1,35	-	1,11	1,5
MIX 37 °C [l]		76	126	195	195	250	297	378	378	494
Dimensions ØxH [mm]		385x530	385x740	460x800	385x1040	460x970	460x1140	460x1395	586x990	586x1230
Weight [kg]	enamelled water tank	12,5	16,4	21,5	22	26	30,3	40	43,8	55,2
	stainless steel water tank	11,5	14,4	19,2	19,5	23,5	25,9	32	37,8	48,3
Warranty	enamelled water tank	3 years full warranty								
	stainless steel water tank	5 years warranty for the water tank / 3 years for the electrical part								

H - stainless X - horizontal

*Eldom*  
FAVOURITE

**Models for horizontal assembly**  
with volume of 50l, 80l ( $\phi$ 385mm and  $\phi$ 460mm),  
100l, 120l, 150l ( $\phi$ 460mm and  $\phi$  585mm) and 200l.



Low heat losses



Four-level protection



Double cathode protection



Drinking water



Combined return safety valve



Option for assembly of anode tester



Environment friendly Freon free polyurethane

Eldom Favourite		For horizontal wall installation						
Model number	enamelled water tank	72267X	72265X	72268X	72270X	72266X	72280X	72281X
	stainless steel water tank	72267HX	72265HX	72268HX	72270HX	72266HX	72280HX	72281HX
Rated volume [l]		50	80	80	100	120	150	200
Rated voltage [V]		220-230 V~						
Rated power [kW]		2	2 / 3					
Rated pressure [MPa]		0,6						
MIX 37 °C [l]		126	195	195	250	297	378	494
Dimensions ØxH [mm]		385x740	460x800	385x1040	460x970	460x1140	586x990	586x1230
Weight [kg]	enamelled water tank	19,8	23	22,3	30	29,8	46,3	56,8
	stainless steel water tank	17,5	19,5	20	26,5	26,4	39,8	49,5
Warranty	enamelled water tank	3 years full warranty						
	stainless steel water tank	5 years warranty for the water tank / 3 years for the electrical part						

H - stainless X - horizontal



*Eldom*  
SMART

SMART decision



CE

PGT  
CH01

BEAB  
Approved



Micro processing control



Low heat losses



Four-level protection



Double cathode protection



Combined return safety valve



Inbuilt anode tester for all models of the range



Environment friendly Freon free Polyurethane



Drinking water

A new generation electrical water heaters with volume from 30 up to 200 liters. They repeat the classic round shape of FAVOURITE\* types but in addition with electronic controller easy to be regulated. The three basic operation modes (heating, late start and anti - freeze) and the additional ECO function meet optimally the requirements of our clients for a high technology water heater with additional operating comfort.

\* The models SMART from our product range have the same model numbers and technical parameters as those from FAVOURITE range, with the addition of letter "E" after the model number.



## Models for vertical assembly with volume of 30l, 50l, 80l ( $\phi$ 385mm and $\phi$ 460mm), 100l, 120l, 150l ( $\phi$ 460mm and $\phi$ 585mm) and 200l.

### ADVANTAGES:

- ☑ **Electronic control system and temperature indicator:** Very precisely, with allowance up to 1 grade you are able to set and control the temperature. The electronic unit consists of a micro-processing unit, LED display, protective moisture resistant folio for the keys and the display.
- ☑ **The Anti-Freeze Mode** does not allow the water inside the water tank to freeze even at minus temperatures during the winter.
- ☑ **The ECO function** sets the device's operational parameters on optimum mode what allows additionally electricity savings.
- ☑ **The Late Start Mode** gives opportunity to set a time interval for delayed switching on of the heating element.
- ☑ **Precisely electronic indication and regulation of water temperature**, in the range of  $\pm 1^{\circ}\text{C}$ .
- ☑ **Over heating protection** in case of failure of a temperature sensor or short circuit of connecting wires.
- ☑ **Double cathode protection.**
- ☑ **Inbuilt anode tester with electronic indication for all models of the range.**
- ☑ **Special designed „4-level Protection” used by Eldominvest, what assures and is a guarantee for actual reliability and safety of the water heater.**
- ☑ **Special enameled covering: it guarantees high water hygiene and its suitability for preparing of food and for drinking.**
- ☑ **Water tanks from high steel acid resistant alloy, grade 316L.**
- ☑ **Big variety of models** for vertical wall assembly with capacity from 30 up to 200 liters.
- ☑ **Multifunctional valve**, manufactured from special PBT plastics (poly-butylenes- teraftalates) which keeps the lime stone away. This combined valve provides these three functions at same time - of a safety, return and differential valves.
- ☑ **All SMART models are manufactured under a triple 100 percent quality control.**



### Buttons and indicators of controller:

- **ON/OFF** (switch on/switch off),
- **DOWN** (going down - for a temperature and delaying of late start),
- **UP** ( going up - for a temperature and delaying of late start ),
- **SET** (entering the Late Start mode).

Holding of one of both **UP** or **DOWN** buttons in ON mode leads to entering the mode for temperature setting and automatically changes the value in respective direction until releasing the button.

Pressing together the **UP** and **DOWN** buttons and holding for at least 2 seconds starts the **ECO function**. The water heater then switches to HEATING mode, on display stays the **E** indication and the water is heated up to  $60^{\circ}\text{C}$  only.

Pressing the **SET** button in ON mode of the water heater results in entering the mode for adjusting the delay of **POSTPONED START** mode. The display shows the hours remaining to the start. After passing of set time the water heater enters the HEATING mode.

**LED indication** consisting of seven indicative LEDs:

- **YELLOW** light for POSTPONED START mode indication,
- **RED** light for indication of switched on heating element,
- Five light emitting diodes (1 red and 4 green) for indication of anode current. By anode current  $I_A < 100\mu\text{A}$  only the red diode is lighting. This indicates that replacement of magnesium protectors is due. The timely exchange of protectors prolongs the life of enameled water tanks.



*Eldom*  
IDEA

IDEA for energy saving



The IDEA Line personifies our ideas and concepts for the contemporary, beautiful, high technology water heater of new generation. The Eldom IDEA water heaters are a symbiosis of different materials-steel and high quality PVC alloy. The high energy efficiency, reliability and the guaranteed without any compromise quality make these water heaters preferred even by the most demanding clients. Thanks to this range we are proud to join the manufacturers who are part of the global campaign for reduction of electrical energy consumption.

**The range includes models of 30l, 50l, 80l and 120l, providing sanitary hot water for households with one or more consumers. Usually they are wall - mounted. The water heaters are safe and user friendly. They are characterized by the higher heat insulation, which increases their efficiency, reducing heat losses, thus resulting in significant electricity savings.**



## ADVANTAGES:

- ☑ **Big variety of models** for horizontal and vertical wall - mounting: volume from 30 up to 120 litres.
- ☑ **Extremely efficient, due to the very low heat losses** (0,2 degrees C /h).

Volume [litres]	Eldominvest water heaters' heat losses [kWh/24h]	Heat losses [kWh/24h] as per the regulations of the SAVE programme
80(Ø475mm)	0.88	1.47
80(Ø400mm)	0.86	1.47

- ☑ Two water tank's materials: enamel covering or stainless acid resistant steel, grade AISI 316L.
- ☑ **Impressive and stylish modern outlook.**
- ☑ **Improved anode protection** of models with enameled water tank.
- ☑ **All ELDOM IDEA enameled models have inbuilt anode testers.**



ANODE TESTER

- ☑ **Special "4 level protection"** used by Eldominvest, guaranteeing real safety and reliability of the water heaters.
- ☑ **Longer warranty term than the common European requirements.**
- ☑ **Heating elements with long life-time, produced at Eldominvest on a state-of-the-art production line.** Some have been designed particularly for these types of water heaters. According to clients' specific requirements there is an option for the water heaters to be produced also with ceramic heating elements.
- ☑ **Easy to install** - flat back board, tightly fitting to the wall.
- ☑ **Multifunctional valve**, manufactured from special PBT plastics (poly-butylenes-teraftalates) keeping the lime stone away. This combined valve provides these three functions at same time - of a safety, return and differential valves.
- ☑ **The horizontal fitted models are equipped with temperature indicator.**
- ☑ **Fast Water Heating Mode** - at horizontally mounted models, through two inbuilt heating elements.
- ☑ **All Eldom IDEA models are manufactured under a triple 100 percent quality control.**

**Models for vertical assembly**  
with volume of 30l, 50l, 80l (400mm and 475mm), 100l and 120l.



-  Low heat losses
-  Four-level protection
-  Double cathode protection
-  Combined return safety valve
-  Inbuilt anode tester for all models of the range
-  Environment friendly Freon free Polyurethane
-  Drinking water

Technical specifications		Eldom Idea for vertical assembly					
Model number	enamelled water tank	72269KA	72267KA	72265KA	72268KA	72270KA	72266KA
	stainless steel water tank	72269KH	72267KH	72265KH	72268KH	72270KH	72266KH
Rated volume [l]		30	50	80	80	100	120
Rated voltage [V]		220-230 V~					
Rated power [kW]		1,5 / 2 / 3	1,5 / 2 / 3	1,5 / 2 / 3	2 / 3	2 / 3	3
Rated pressure [MPa]		0,6					
MIX 37 °C [l]		76	126	195		250	297
Dimensions BxWxH [mm]		400x400x570	400x400x780	475x475x850	400x400x1095	400x400x1025	475x475x1195
Weight [kg]	enamelled water tank	16,5	19,5	28,5	27	33,2	38
	stainless steel water tank	15,1	18	24	24	30,6	34
Warranty	enamelled water tank	3 years full warranty					
	stainless steel water tank	5 years warranty for the water tank / 3 years for the electrical part					

H - stainless



### Models for horizontal assembly with volume of 80l and 120l



Low heat losses



Four-level protection



Double cathode protection



Combined return safety valve



Inbuilt anode tester for all models of the range



Environment friendly Freon free Polyurethane



Drinking water

Technical specifications		Eldom Idea for horizontal assembly	
Model number	enamelled water tank	72427	72428
	stainless steel water tank	72427H	72428H
Rated volume [l]		80	120
Rated voltage [V]		220-230 V~	
Rated power [kW]		3,2	
Rated pressure [MPa]		0,6	
MIX 37 °C [l]		195	297
Dimensions BxWxH [mm]		475x475x825	475x475x1160
Weight [kg]	enamelled water tank	28,5	38
	stainless steel water tank	26	33,5
Warranty	enamelled water tank	3 years full warranty	
	stainless steel water tank	5 years warranty for the water tank 3 years for the electrical part	

H - stainless

*eldom*  
V.I.P.

## Intelligent VIP comfort



CE

PG  
CH01

BEAB  
Approved



Micro processing control



Low heat losses



Four-level protection



Double cathode protection



Combined return-safety valve



Inbuilt anode tester for all models of the range



Environment friendly Freon free Polyurethane



Drinking water

Our VIP line is an enhanced version of wall - mounted electrical water heaters of IDEA Line with a precise new generation electronic management. This is possible due to the intelligent electronic controller, specially designed for electrical water heaters of a higher class. Thanks to the big graphic LCD display, new and useful functions have been added. Thus, there is more comfort for you when using the water heater. We put maximum efforts to increase the energy efficiency when heating the water which directly results in reduction of electricity costs. All these features made the VIP water heaters the model preferred by all customers demanding stylish, efficient, high technology appliances.



## Models for vertical assembly with volume of 30l, 50l, 80l (400mm and 475mm), 100l and 120l.

### ADVANTAGES:

☑ **Digital control:** The electronic control panel increases the comfort when using the appliance. It consists of a micro processing control, liquid crystal display and protective moisture resistant folio for the display buttons. Besides the precise temperature regulation, this electronic unit has several additional features:

- Control of the water heater's cathode protection - the anode protectors' status is shown as a chart
- Programming of twenty - four hour water heating interval is possible. The purpose of this feature is the intelligent management of storage temperature taking into account night-time tariff electricity without user's intervention.
- Setting the Postponed Start of Heating Mode. This is an extraordinary comfortable feature when using a water heater mounted in homes for temporary occupation. At these places the water heater is able to switch on automatically at the right time and to be ready for the owners or guests with already prepared hot water.
- Gives information about the amount of electric energy consumed by the water heater, which allows setting of two rates, for example DAY and NIGHT RATE.
- Observes the heating element's good condition and provides information in case the immersion heater does not heat the water fast enough.
- Observes current leakage from the heating element into the water. Automatically switches off the water heater by registration of such problem.
- Anti-Freeze function is also available as safety measure when using the water heater at places not protected from very low temperatures.
- **Current water temperature, precisely measured with allowance of 1 °C;**
- **Setting the display contrast.**



- ☑ **High energy efficiency, due to the increased heat insulation and the micro process control.**
- ☑ **Additional savings thanks to the operation programming in low rate time zones.**
- ☑ **Unique six-level protection: safety valve, external electronic thermo-regulator and thermal cut-off, specially designed elliptic flange, protection against thermo-regulator's failure, protection against heating element's breakdown, protection against current leakage.**
- ☑ **Safety and guaranteed quality without any compromises.**
- ☑ **Vertical wall - mounted models with capacity of 30l, 50l, 80l and 120l.**
- ☑ **All models of VIP Line are equipped with electronic anode tester, which indicates the anode protector's condition.**
- ☑ **Self diagnostic electronic system and a sound-signal in case of failure.**
- ☑ **Modern outlook.**
- ☑ **All VIP models are manufactured under a triple 100 percent quality control.**



*Eldom*  
ENERGY

ENERGY from nature



Eldom ENERGY Line covers variety of electrical water heaters combined with coils and developed with the outlook of main product ranges FAVOURITE, SMART, IDEA and VIP. Although they have different designs, the combined ENERGY water heaters come together with one mutual functional advantage - they provide an option for the hot water tanks to use alternative energy sources such as heat pumps, boilers, heating systems and solar collectors. The usage of our Eldom ENERGY water heaters becomes more and more widespread thanks to their excellent technical features and parameters. These are the high energy efficiency, practicality, long life-time and wide variety of available designs.

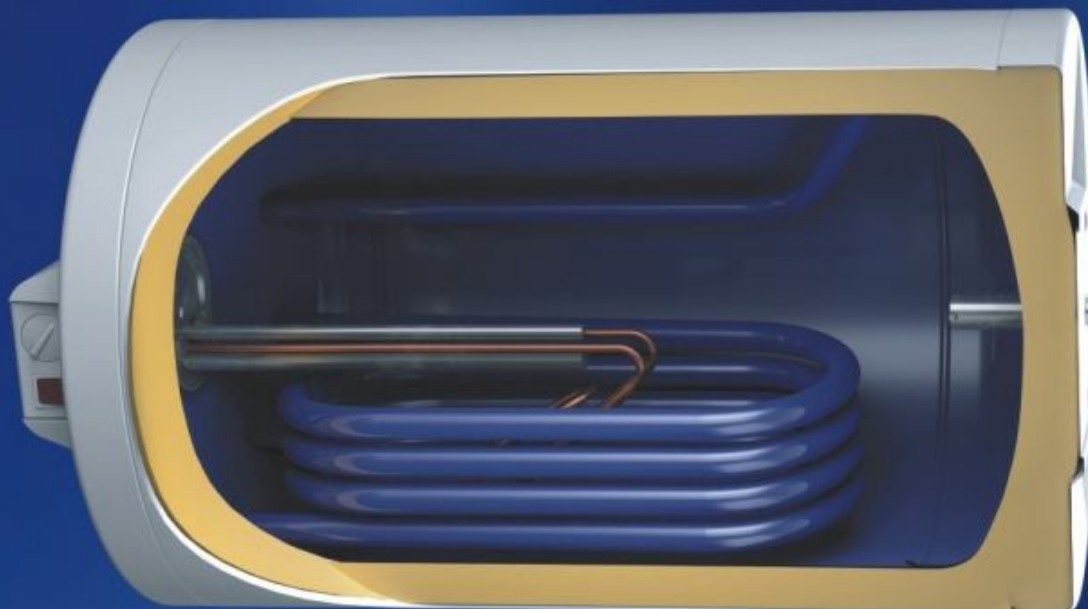
Eldom ENERGY is an attractive proposal to our clients who already have decided to be part of the global campaign for utilization of renewable energy sources. Because saving the nature actually means saving us!





## ADVANTAGES:

- ☑ We are offering you the possibility to make a choice of combined ENERGY water heaters with the outlook of all ranges presented above.
- ☑ **Variety of models** for horizontal and vertical wall mounting: capacity from 80 up to 200 l.
- ☑ **The ENERGY water heaters have all advantages of the Eldominvest electric water heaters' ranges:** energy saving, cost efficiency, four-level and six-level protection, double anode protection of enameled water heaters, stainless steel water tanks made of steel grade 316L etc.
- ☑ **You are able to choose Eldom ENERGY with one or two coils according to alternative energy sources you use.**
- ☑ **The coils of the models with stainless steel water tank are made from corrugated pipes manufactured at Eldominvest. They have 15 % higher efficiency than the smooth tubular coils.**
- ☑ **Easy to install and service friendly.**
- ☑ **All ENERGY models are manufactured under a triple 100 percent quality control.**



**The water heaters combined with heat exchanger meet the requirements of standards, different from these ones applicable for electric water heaters:**

-BDS EN 12897:2006 „Water-supply requirements for indirect heated water containers without ventilation (closed)“.

-BDS EN 60379:2005 „Methodology for measuring of parameters of water heaters for households, with electric heating elements“.



**Models with one heat exchanger for vertical assembly with volume of 80l (Ø385mm and Ø460mm), 100l, 120l, 150l (Ø460mm and Ø586mm) and 200l.**



Low heat losses



Four-level protection



Double cathode protection



Drinking water



Combined return safety valve



Option for assembly of anode tester



Environment friendly Freon free polyurethane



Micro processing control



Corrugated coil

**Water Heaters with one heat exchanger for vertical assembly Eldom Energy**

Model number	enamelled water tank	72268T	72265T	72270T	72266T	72280T	72280MT	72281T
	stainless steel water tank	72268HT	72265HT	72270HT	72266HT	72280HT	72280MHT	72281HT
Rated volume [l]		80	80	100	120	150	150	200
Rated voltage [V]		220-230 V~						
Rated power [kW]		1,5 / 2 / 3						
Rated pressure [MPa]		0,6						
MIX 37 °C with electrical heater[l]		195	195	250	297	378	378	494
Dimensions ØxH [mm]		385x1040	460x800	460x970	460x1140	586x990	460x1395	586x1230
Weight [kg]	enamelled water tank	30,5	25	38	44	52,3	48	69,5
	stainless steel water tank	24,5	20,5	30	33	41,8	35	58,5
Way of heating the water		Electrical heating element + Heat exchanger						
Heat exchanging area of the coil [m <sup>2</sup> ]	enamelled water tank	0,36	0,36	0,41	0,53	0,6	0,53	0,6
	stainless steel water tank	0,48	0,45	0,5	0,66	0,84	0,87	0,84
Diameter of the pipes (water main/heat exchanger)		1/2" / 1/2"	1/2" / 3/4"	1/2" / 3/4"	1/2" / 3/4"	1/2" / 3/4"	1/2" / 3/4"	1/2" / 3/4"
Warranty	enamelled water tank	3 years full warranty						
	stainless steel water tank	5 years for the water tank / 3 years for the electrical part						

H - stainless T - one heat exchanger



## Models with two heat exchangers for vertical assembly with volume of 80l ,120l and 150l .



Low heat losses



Four-level protection



Double cathode protection



Drinking water



Combined return safety valve



Option for assembly of anode tester



Environment friendly Freon free polyurethane



Micro processing control

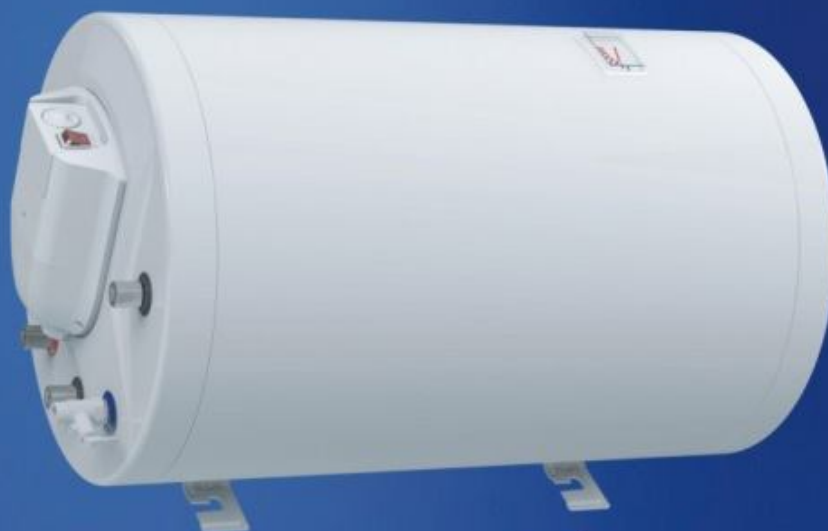


Corrugated coil

Water Heaters with two heat exchangers for vertical assembly Eldom Energy				
Model number	enamelled water tank	72268T2	72266T2	72280MT2
	stainless steel water tank	72268HT2	72266HT2	72280MHT2
Rated volume [l]		80	120	150
Rated voltage [V]		220-230 V~		
Rated power [kW]		1,5 / 2 / 3		
Rated pressure [MPa]		0,6		
MIX 37 °C with electrical heater[l]		195	297	378
Dimensions ØxH [mm]		385x1040	460x1140	460x1395
Weight [kg]	enamelled water tank	33	49,5	52,2
	stainless steel water tank	25,5	38	39,5
Way of heating the water		Electrical heating element + Heat exchanger		
Heat exchanging area of the coil [m²]	enamelled water tank	0.36/0.22	0,53 / 0,3	0,83 / 0,3
	stainless steel water tank	0.48/0.24	0,66 / 0,34	0,87 / 0,34
Diameter of the pipes (water main/heat exchanger)		1/2" / 1/2"	1/2" / 3/4"	1/2" / 3/4"
Warranty	enamelled water tank	3 years full warranty		
	stainless steel water tank	5 years for the water tank / 3 years for the electrical part		

H - stainless T2 - two heat exchangers

## Models with one heat exchanger for horizontal assembly with volume of 80l (Ø385mm and Ø460mm) and 120l,



Low heat losses



Combined return safety valve



Four-level protection



Option for assembly of anode tester



Double cathode protection



Environment friendly Freon free polyurethane



Drinking water



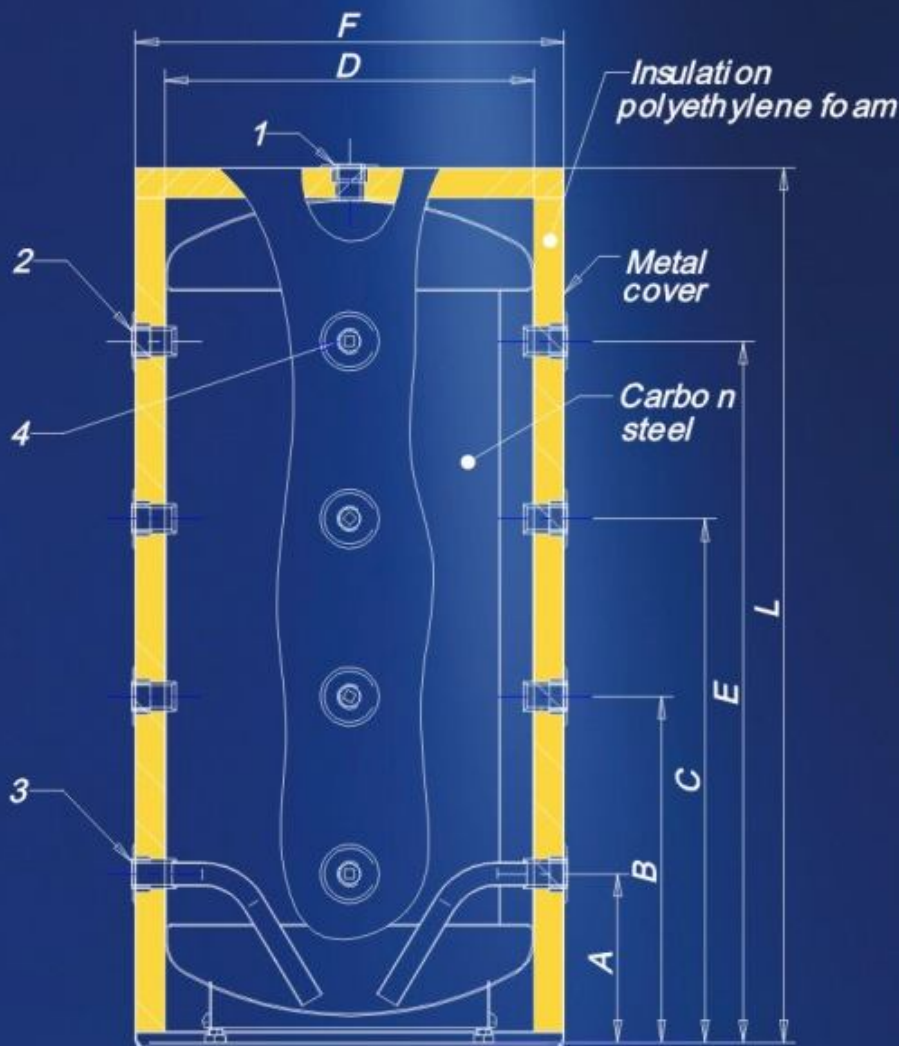
Corrugated coil

**Water Heaters with one heat exchanger for horizontal assembly Eldom Energy**

Model number	enamelled water tank	72265XT	72268XT	72266XT
	stainless steel water tank	72265HXT	72268HXT	72266HXT
Rated volume [l]		80	80	120
Rated voltage [V]		220-230 V~		
Rated power [kW]		2 / 3		
Rated pressure [MPa]		0,6		
MIX 37 °C with electrical heater[l]		195	195	297
Dimensions ØxH [mm]		460x800	385x1040	460x1140
Weight [kg]	enamelled water tank	26,6	30	39,5
	stainless steel water tank	22,8	24,5	34,5
Way of heating the water		Electrical heating element + Heat exchanger		
Heat exchanging area of the coil [m <sup>2</sup> ]	enamelled water tank	0,35	0,36	0,53
	stainless steel water tank	0,38	0,48	0,66
Diameter of the pipes (water main/heat exchanger)		1/2" / 1/2"	1/2" / 1/2"	1/2" / 3/4"
Warranty	enamelled water tank	3 years full warranty		
	stainless steel water tank	5 years for the water tank / 3 years for the electrical part		

H - stainless X - horizontal T - one heat exchanger





## Buffer tanks



Low heat losses



Environment friendly Freon free polyurethane

### Free standing not enameled buffer tanks

#### CHARACTERISTICS

Rated volume	L.	200	300	400	500
Maximum rated pressure	bar	6			
Weight when empty	kg	40	50	90	125

#### CONNECTIONS

1: Purge	"GAS/F	1	1	1-1/2	1-1/2
2: Impulsion / Return	"GAS/F	1	1-1/2	1-1/2	1-1/2
3: Impulsion / Return - Empty	"GAS/F	1	1-1/2	1-1/2	1-1/2
4: Temperature	"GAS/F	1/2	1/2	1/2	1/2

#### DIMENSIONS

Level A	mm	228	228	267	353
Level B	mm	469	596	571	690
Level C	mm	710	965	876	1027
Level D	mm	φ 500		φ 640	
Level E	mm	950	1333	1180	1364
Level F	mm	φ 580		φ 740	
Level L	mm	1185	1573	1450	1721

*Eldom*  
TITAN

TITANic performance



CE

PG  
CH01

BEAB  
Approved

The big capacity floor standing water heaters from TITAN range of Eldominvest are designed for big consumers of hot water. They are installed directly on the floor of the service rooms. The clients who already rely on the advantages of this range for number of years are usually owners of one-family houses, family hotels and small production enterprises. They make this choice because of the high energy efficiency of TITAN water heaters thanks to combining of different energy sources, the opportunity for additional thermostat and heating element to be installed, the presence of circulation socket and thermal manometer. Big, stable and durable - practically our TITAN water heaters provide big amount of hot water at minimal costs.

Eldom TITAN water heaters meet all European standards and we are able to manufacture also models according to special clients' requirements.



## ADVANTAGES:

- ☑ Wide variety of models:
  - With capacity of 150, 200, 300, 400, 500, 750 and 1000 liters;
  - With enameled water tank or with water tank made of high - strength alloy Chrome - Nickel steel grade AISI 316L;
  - **Direct heating trough electric heating elements with long life-time, operating with single-phase or three-phase current, designed and manufactured at Eldominvest especially for these models of water heaters.**
  - **Indirect heating trough one or two heat exchangers. For these models we provided a constructive possibility for adding of electrical part.**
  - Combined water heaters - combination of electrical heating element and inbuilt heat exchanger.
- ☑ **Low energy losses.** The polyurethane insulation of TITAN water heaters is with a thickness of 40 up to 80 mm.
- ☑ **During design process we forecasted all outlets of TITAN water heaters to be installation and after sale service friendly.**
- ☑ **Comfortable special-shaped cover with mechanical or electronic controller. The electronic controller allows very precise water heating process regulation.**
- ☑ **Water tanks from acid resistant stainless steel grade AISI 316L.**
- ☑ **The coils of models with stainless water tank are manufactured from corrugated pipes, made at Eldominvest. The pipes have 15% better heat exchange parameters compared to the smooth tubular coils.**
- ☑ All TITAN models from 300L above are equipped with **thermal manometer.**
- ☑ We provide special **socket allowing mounting of additional heating element.**
- ☑ We have equipped the 750 and 1000 liters' models with additional **pressure regulator and water draining tap.**
- ☑ Aiming an automatical water heating process we provided **outlets for mounting an additional temperature regulator for each of the heat exchangers.**
- ☑ **Heating elements with long life-time, manufactured at Eldominvest on state-of-the-art production line.** They have been especially designed for operation at single-phase and three-phase current.
- ☑ According to special client's requirements there is an option for the water heaters to be produced also with ceramic heating elements.
- ☑ **All Eldom TITAN models are manufactured under a triple 100 percent quality control.**

We have designed and we manufacture special models of water heaters particularly for solar installations.

**The water heaters combined with heat exchanger meet the requirements of standards, different from these ones applicable for electric water heaters:**

-BDS EN 12897:2006 „Water-supply requirements for indirect heated water containers without ventilation (closed)“.

-BDS EN 60379:2005 „Methodology for measuring of parameters of water heaters for households, with electric heating elements“.





## Floor standing water heaters with electrical heating element with volume of 150l, 200l, 300l, 400l, 500l, 750l and 1000l.



Low heat losses



Four-level protection



Double cathode protection



Drinking water



Option for assembly of anode tester



Environment friendly Freon free polyurethane



Socket for additional heating element



Thermal manometer for models with volume of 300 - 1000l.

Floor standing water heaters (150-1000 l) Eldom Titan

Model number	enamelled water tank	72280FZ	72281FZ	72282	72288ZM	72289ZM	72351EC	72352EC	
	stainless steel water tank	72280FZH	72281FZH	72282H	72288ZHM	72289ZHM	72351C	72352C	
Rated volume [l]		150	200	300	400	500	750	1000	
Rated voltage [V]		220-230 V~			380-400 3N~				
Rated power [kW]		3			9		12		
Rated pressure [MPa]		0,8							
Way of heating the water		Electrical heating element							
MIX 37 °C with electrical heater [l]		378	494	710	998	1260	1890	2520	
Diameter of the pipes (water main)		3/4"						1"	
Dimensions ØxH [mm]		586x960	586x1200	586x1575	740x1475	740x1790	990x1665	990x2115	
Weight [kg]	enamelled water tank	44.7	57.6	75.7	117	161.5	155	213.1	
	stainless steel water tank	41.5	49.6	63.8	96.1	109	149	179	
Average insulation thickness		43	43	43	50	50	70	70	
Warranty	enamelled water tank	3 years for the water tank / 2 years for the electrical part							
	stainless steel water tank	5 years for the water tank / 2 years for the electrical part							

H - stainless (without 750 and 1000 l)  
 E - enamelled (only at 750 and 1000 l)  
 F - free standing water heater

Z - flange on 45 °  
 C - 12 kW electrical heater  
 M - metal case at 400 and 500 l  
 150 and 200 l - only with metal case, 750 and 1000 l - only with plastic case



## Floor standing water heaters with single coil with volume of 150l, 200l, 300l, 400l, 500l, 750l and 1000l.



Low heat losses



Four-level protection



Double cathode protection



Drinking water



Corrugated coil



Option for assembly of anode tester



Environment friendly Freon free polyurethane



Socket for additional heating element



Thermal manometer for models with volume of 300 - 1000l.



Option for micro processing control

**Floor standing water heaters with single coil (150-1000 l) Eldom Titan**

Model number	enamelled water tank	72280FZT	72281FZT	72282T	72288ZTM	72289ZTM	72351ECT	72352ECT
	stainless steel water tank	72280FZHT	72281FZHT	72282HT	72288ZHTM	72289ZHTM	72351CT	72352CT
Rated volume [l]		150	200	300	400	500	750	1000
Rated voltage [V]		220-230 V~			380-400 3N~			
Rated power [kW]		3			9		12	
Rated pressure [MPa]		0,8						
Way of heating the water		Electrical heating element + Heat exchanger						
MIX 37 °C with electrical heater [l]		378	494	710	998	1260	1890	2520
Heat exchanging area of the coil [m <sup>2</sup> ]		0,96	0,96	1,15	1,66	1,96	2,22	3,13
Diameter of the pipes (water main/heat exchanger)		3/4" / 3/4"			3/4" / 1"		1" / 1"	
Dimensions ØxH [mm]		586x960	586x1200	586x1575	740x1475	740x1790	990x1665	990x2115
Weight [kg]	enamelled water tank	57	70.2	88.2	145.5	195	185	259.6
	stainless steel water tank	46.5	53.3	68.7	102.5	117	156.4	187.6
Average insulation thickness		43	43	43	50	50	70	70
Warranty	enamelled water tank	3 years for the water tank / 2 years for the electrical part						
	stainless steel water tank	5 years for the water tank / 2 years for the electrical part						

H - stainless (without 750 and 1000 l)  
E - enamelled (only at 750 and 1000 l)  
T - one heat exchanger  
F - free standing water heater

Z - flange on 45 °  
C - 12 kW electrical heater  
M - metal case at 400 and 500 l  
150 and 200 l - only with metal case, 750 and 1000 l - only with plastic case



## Free standing water heaters with dual coil with volume of 200l, 300l, 400l, 500l, 750l and 1000l.



Low heat losses



Four-level protection



Double cathode protection



Drinking water



Corrugated coil



Option for assembly of anode tester



Environment friendly Freon free polyurethane



Socket for additional heating element



Thermal manometer for models with volume of 300 - 1000l.



Option for micro processing control

**Floor standing water heaters with dual coil (200-1000l) Eldom Titan**

		72281FZT2	72282T2	72288ZT2M	72289ZT2M	72351ECT2	72352ECT2
Model number	enamelled water tank	72281FZT2	72282T2	72288ZT2M	72289ZT2M	72351ECT2	72352ECT2
	stainless steel water tank	72281FZHT2	72282HT2	72288ZHT2M	72289ZHT2M	72351CT2	72352CT2
Rated volume [l]		200	300	400	500	750	1000
Rated voltage [V]		220-230 V~		380-400 3N~			
Rated power [kW]		3	9		12		
Rated pressure [MPa]		0,8					
Way of heating the water		Electrical heating element + Heat exchanger					
MIX 37 °C with electrical heater [l]		494	710	998	1260	1890	2520
Heat exchanging area of the coil [m <sup>2</sup> ]		1,36	2,04	2,72	3,32	3,52	5,35
Diameter of the pipes (water main/heat exchanger)		3/4" / 3/4"		3/4" / 1"		1" / 1"	
Dimensions ØxH [mm]		586x1200	586x1575	740x1475	740x1790	990x1665	990x2115
Weight [kg]	enamelled water tank	74.7	100.7	160	211.1	205	293.6
	stainless steel water tank	55.6	72.7	107	123	162.1	194.6
Average insulation thickness		43	43	5	50	70	70
Warranty	enamelled water tank	3 years for the water tank / 2 years for the electrical part					
	stainless steel water tank	5 years for the water tank / 2 years for the electrical part					

E - enamelled (only at 750 and 1000 l)

T2 - dual coil

F - free standing water heater

Z - flange on 45 °

C - 12 kW electrical heater

M - metal case at 400 and 500 l

200 l - only with metal case, 750 and 1000 l - only with plastic case



## MULTIFUNCTIONAL ELECTRONIC CONTROL

At your kind attention is the unique multifunctional electronic module designed for the water heaters, equipped with heat exchangers. The module combines the precise control of electric heating element's operation and the action of water heating installation coming from a solar collector.

The electronic controller looks very modern and impressive. The graphic LCD display is large enough. This device allows adding of new and useful features which make utilization of our water heaters and the entire system more comfortable.



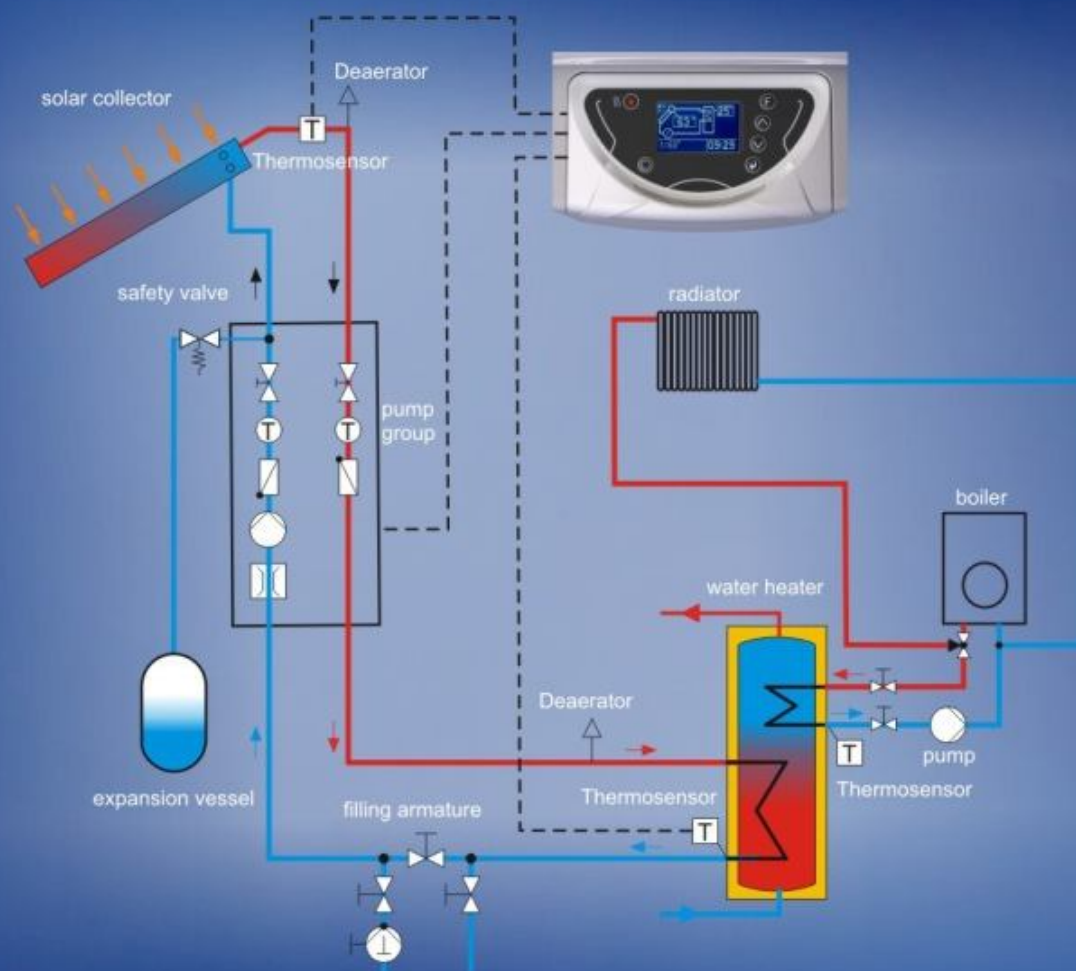
The controller possesses several specific functional features which can not be found within other devices of this class. Some of them are:

- ◆ Adding of energy from the electric heating element in case the sun-heated water is not enough.
- ◆ Anti-freeze function of both the water heater and the solar collector.
- ◆ Anti-overheating for the solar collector if not using hot water for a long time and an alarm, if the device can not manage the situation.
- ◆ Information about the condition of the anode protector.
- ◆ Information about current leakage from heating element into the body more than 30mA and automatic switching off of the water heater in case of registration of such a leakage.
- ◆ Using of self-adapting and energy saving algorithm of water heating by the electric heating element.
- ◆ Diagnosis of all circuits applicable.
- ◆ Presence of timer and calendar which support a system time, date and hour.
- ◆ Postponed start on preliminary set time and date
- ◆ Protection when there is an indication of temperatures below freezing.
- ◆ Programming of specific on - /off-scheme for the electric heating element to work automatically in time zones with low energy rate.
- ◆ Feature for measurement of electricity consumption kWh, separately for two or more rates.
- ◆ Simultaneous indication of water temperatures both in the water heater and in the sun collector.
- ◆ Monitoring the proper heating element operation and displaying a message if the water is not heated fast enough.



## ADVANTAGES:

- **Complying with EU requirements of the Directives for ECO-Design and the Regulations for encouraging the use of renewable energy sources.**
- The most up - to - date set of elements has been used in the construction of our new electronic unit, which improves the appliance's durability.
- **Small sizes and weight** - the module is two times smaller in size due to its simple and sophisticated construction which improves the ventilation.
- The construction makes easier both the access to the electronic block and its eventual repair.
- The big number of wire connections has been eliminated what decreases the risk of over heating and melting of wires in the contact zone.
- The electronic chip is water-proof lacquered.
- **New high definition graphic display.**
- Neat and simple outlook which does not confus the client and at the same time allows him/her to visualize the information needed.
- **Li-ion long life battery**, supporting the timer and calendar functions in case of lack of **voltage**.
- **Micro processor flash memory**, storing block's settings for a very long time.
- Option for changing the interval of day/night rate electricity.
- **ECO mode** - when activated, the preset water temperature is reduced automatically to 60°C, thus saving electric energy.
- **Optimal settings of temperature hysteresis of electronic relay** the electronic controller has no fixed but variable hysteresis. When calculating its value, the micro processor considers not only the set temperature and current water temperature, but also the change of these temperatures in time. This feature allows reaching the optimal water heater energy efficiency.
- The new electronic block is an open system that could be easily modified and updated. It allows new development of already existing base without requiring significant engineering and financial resources.





## Indications of different parameters

t=60°


 0000 kWh


 0000 kWh

On 22:00

Off 06:00

12-05-2009

 06:00

 22:00

A 

t1=25°

t3=63°

$\Delta t$  On=10°

$\Delta t$  Off=05°

**No Errors**

## 1. Electric water heating mode



## 2. Electric heating mode with timer



## 3. Combined mode



## 4. Solar mode





## SOLAR PANELS



Searching for a complex solution in the area of renewable energy sources for our clients, we, at Eldominvest developed two types of solar collectors, as follows:

1. Flat plate solar collectors with selective coating and reduced heat losses.
2. Solar thermal vacuum tube collectors with triple layer selective covering and compound parabolic concentrators.

### Flat plate solar collectors with selective coating and limited heat losses

Due to its friendly purchasing price, the flat plate collector is the most common type of solar collector for water heating through sun radiation. The collector's construction consists of insulated aluminum profile box with in-built absorber, thermal insulation and tempered heat-resistant glass with high light-permeable feature and capability for saving the sun radiation. The sun energy heats the fluid circulating within the pipes as the last heats the water inside the water heater through a circulation system.

General features:

**Copper - made absorber with multi - layer selective coating; this is the material that absorbs sun radiation and turns it into heat energy. The selective coating of our solar collectors is manufactured by a leading German manufacturer and ensures over 80% collector's efficiency. Using copper for the rest of the absorber, provides high heat render without unnecessary heat waste. The selective coating realizes very good thermal efficiency. Besides absorbing most of the sun radiation, the coating prevents thermal emissions out the covering.**

The absorber has high temperature resistance, good strength, maximal efficiency, environment friendly production technology and long life-time operation.

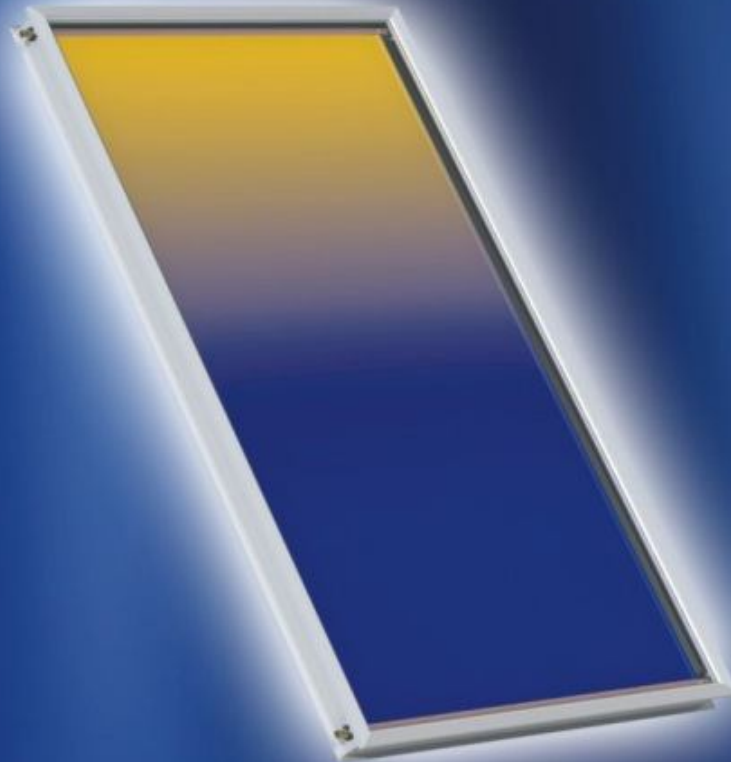
**Improved thermal insulation made of mineral stone wadding, 40 mm thick, which ensures minimal heat losses even under most severe weather conditions.**

**Tempered heat resistant prismatic glass (Ferro-low) 3,2 mm thick - it has high- permeable feature and a capability for holding on the sun radiation.**

**Solid construction. The frame from aluminum profiles provides strength for the entire collector. The bottom is from aluminum steel, as well.**

**Long life-time operation. The materials' quality is a guarantee for long life-time product operation.**





	Technical data	Models		
		SC-FP 200	SC-FP 230	SC-FP 250
1	Collector type	Roof-mounted collector		
2	Overall area [m <sup>2</sup> ]	2,02	2,34	2,51
3	Absorber area [m <sup>2</sup> ]	1,84	2,14	2,3
4	Aperture area [m <sup>2</sup> ]	1,91	2,22	2,39
5	LxWxH [mm]	1730x1170x83	2000x1170x83	2150x1170x83
6	Weight [kg]	35	40	42
7	Absorber capacity [l]	1,4	1,6	1,7
8	Housing	Al-frame		
9	Surface	Al, natural or anodized ( improved corrosion resistance)		
10	Back plate	Al-sheet		
11	Absorber sheet	Cu or Al, High- selective coated		
12	Absorbtion * [%]	95		
13	Emission* [%]	5		
14	Ø manifold [mm]	18 or 22		
15	Ø risers [mm]	8		
16	Connectors	blank (compression joint), coupling nut with flat seal		
17	Glass	3,2 mm tempered solar safety glass		
18	Transmittance of glass [%]	95		
19	Insulation	40 mm mineral wool plate		
20	Max stagnation temperature	234°C under test conditions		
21	Max operating pressure	10 bar		
22	Proper heat transfer medium	Polypropilene glycol / water mixture		
23	Approved installation angle	min 15°, max 75°		
24	Standard packaging	packed individually, 7 collectors, vertical		



## Solar thermal vacuum tube collectors with triple layer selective coating and compound parabolic concentrators

The solar thermal vacuum tube collectors can operate all around the year. They have excellent insulation parameters, they catch and absorb the sun energy at a maximum level. The absorber and the heat tube are installed in a glass tube. They are put under evacuated conditions and are able to provide a perfect thermal insulation, a permanent corrosion protection and a protection against further environmental effects, as well. They assimilate fast the sun radiation both in cloudy weather and in cold winter months.

The vacuum tubes of Eldominvest's solar collectors have triple layer selective coating.

The absorbing surface is in the core of their operation. The triple layer protective tube increases the sun collector's efficiency by more than 12 %.

Operational features:

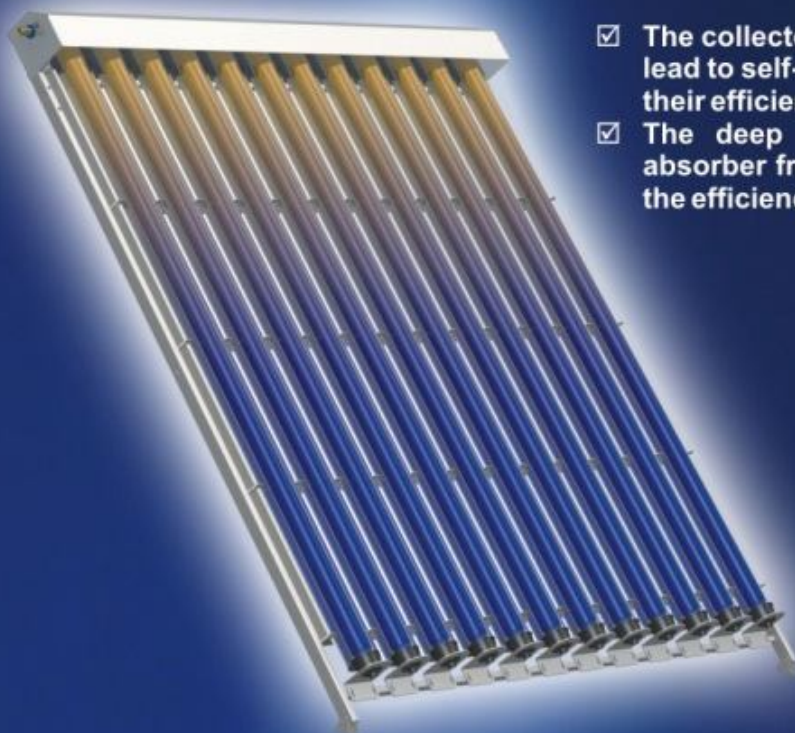
- ☑ High temperature resistance, thanks to the special triple layer coating, the temperature can reach up to 300°C without changing the coating's physical parameters.
- ☑ High protection from low ambient temperatures - low reflection capability, low heat losses, good absorbing output in cold weather and power for generation of hot water.
- ☑ **High absorbing capability** of 92%, reflection declination of 65%, heat increase of 12%, all these parameters leading to a high temperature and even more hot water.
- ☑ **Excellent thermal efficiency.** The solar selective coating absorbs the bigger part of solar radiation and at the same time it prevents the thermal emissions to go out the coating. Our laboratory tests show absorbing values of 0.92 - 0.96 and emission values of 0.06.
- ☑ **Excellent mechanical resistance** thanks to the improved molecular coating structure the vacuum tubes can resist on high temperature loading as the operation temperature inside the collector can reach 300°C. **The coating is resistant to aging, cracking, peeling and some other damages.** The tubes glass is high technology borosilicate 3.3 glass which balances the temperature. This prevents the glass from breaking down.
- ☑ **Excellent corrosion resistance and long life**-high technology borosilicate glass with  $3.3 \times 10^{-6}/^{\circ}\text{C}$  linear extension coefficient, executed according to ISO1776 international standard for acids test - class 1 and ISO695 for alkalis test - above the class 2 level. It is able to resist on hailstorm with balls' diameter of 25 mm.
- ☑ **Use of compound parabolic mirrors.** The reflector construction raises the collector's efficiency, thus utilizing the sun energy in the best way all the year round. Sun rays have been absorbed under such fall down angle which ensures all-day direct shining on collector as the back side, not shined actually, is solar radiated through the parabolic reflector. This improves significantly the thermal efficiency comparing to other vacuum collectors.

- 1 Light reflection at direct sun radiation
- 2 Light reflection at angle sun radiation
- 3 Scattered light reflection when cloudy weather



- ☑ Better thermal insulation The insulation is 50 mm thick and it is executed in high quality stone wadding. It provides very low heat losses and high thermal resistance of product.
- ☑ The collector tube has its own know-how feature - the heat exchange between heat tubes and the passing solar fluid (anti-freeze/ water) is improved.
- ☑ **When disassembling, the tubes are protected against leakage and loss of water or other operational fluid.**





- ☑ The collector's construction and round shape of pipes lead to self-cleaning from dust or snow and in this way their efficiency is guaranteed all around the year.
- ☑ The deep vacuum inside the tubes protects the absorber from getting cold. Thus, the collector keeps the efficiency even at lower ambient temperatures.

All above mentioned features make our solar thermal vacuum tube collectors easy for utilization all around the year what guarantees the profitableness of the investment. They bring down as much as possible the heat losses and save excellent parameters even in foggy and cloudy weather.

Sollar vacuum collectors CPC		Model		
		SC-VH 80	SC-VH 120	
Technical characteristics		Heat pipe vacuum tube with absorber		
1	Tube construction	Heat pipe vacuum tube with absorber		
2	Number of collector tubes	8	12	
3	Gross surface of collector	1,46 m <sup>2</sup>	2,16 m <sup>2</sup>	
4	Active surface	1,27 m <sup>2</sup>	1,89 m <sup>2</sup>	
5	Angle of inclination	15 ° to 90 °	15 ° to 90 °	
6	Length x width x height (mm)	2000x1080x179.2	2000x1600x179.2	
7	Weight	31.5 kg	44 kg	
8	Heat transfer fluid	Anti-freeze Fluid (Water-Propylene Glycol)	Anti-freeze Fluid (Water-Propylene Glycol)	
9	Min. volume flowrate per collector(L/H)	30	45	
10	Rated volume flowrate per coll.(L/H)	50	75	
11	Max. volume flowrate per collector(L/H)	1200	1200	
12	Max. Operating pressure	10 bar	10 bar	
Three-target vacuum tube performance and specification	14	Glass material	High borosilicate 3.3 glass	High borosilicate 3.3 glass
	15	Outer tube diameter and glass thickness	Ø58±0.7mm; Glass thickness 1.6±0.15mm	Ø58±0.7mm; Glass thickness 1.6±0.15mm
	16	Inner tube diameter and glass thickness	Ø47±0.7mm; Glass thickness 1.6±0.15mm	Ø47±0.7mm; Glass thickness 1.6±0.15mm
	17	Tube length	1800mm	1800mm
	18	Coating material	CU/SS-ALN(H)/SS-ALN(L)/ALN	CU/SS-ALN(H)/SS-ALN(L)/ALN
	19	Sediment method	Three Target magnetron sputtering plating	Three Target magnetron sputtering plating
	20	Absorptivity	Absorptivity:α =0.92 □ 0.96 (AM1.5)	Absorptivity:α =0.92 □ 0.96 (AM1.5)
	21	Emission ratio	Emission: ε=0.04 □ 0.06(80 ±5°C)	Emission: ε=0.04 □ 0.06(80 ±5°C)
	22	Vacuum degree	P75.0X10 <sup>-3</sup> (PA)	P75.0X10 <sup>-3</sup> (PA)
	23	Stagnation temperature (temperature inside of empty evacuated tubes)	260 □ 300°C	260 □ 300°C
	24	Average heat loss	ULT 0.4 □ 0.6 W/(m <sup>2</sup> ·°C)	ULT 0.4 □ 0.6 W/(m <sup>2</sup> ·°C)
	25	Hail resistance	Ø25 mm	Ø25 mm
	26	Pressure-endure	1MPa	1MPa
	27	Heat pipe material	TP2 copper	TP2 copper
28	Manifold pipe material	T2 copper (Ø35x1.2mm)	T2 copper (Ø35x1.2mm)	
29	Insulation	Rock wool	Rock wool	
30	Thickness of insulation(mm)	50	50	
31	Density of insulation (kg/m <sup>3</sup> )	180	180	
32	Sealing Materials	EPDM	EPDM	
33	Stagnation temperature, module	180°	180°	
34	Stagnation temperature, pipe	210°C	210°C	
35	Connection	Compression fitting, 22mm	Compression fitting, 22mm	
36	Fluid content per module	0,9 l	1,1 l	



## Small capacity water heaters



*Eldom*  
FAVOURITE  
MINI

*Eldom*  
IDEA  
MINI

Compact storage water heaters, with capacity from 5 up to 15 liters, discreetly providing hot water for the households. They are very suitable to be used in rooms without availability of shared hot water installation. All models of both ranges are appropriate for hidden, as well as for uncovered assembly.

The water heaters from Favorite Mini range are manufactured with enameled or stainless steel water tank (acid resistant stainless steel, grade 316L). We are offering two versions: free flow type and under pressure type.

### 5, 10 and 15 liters Eldom Favorite Mini and Eldom Idea Mini models, free - flow type



CE

PGT  
CH01

BEAB  
Approved



Low heat losses



Four-level protection



Drinking water



Mixing tap



Option for assembly of anode tester



Environment friendly Freon free Polyurethane

- ☑ **Fully equipped for assembly** we are offering them together with flexible hoses and specially designed mixing faucet. **The faucet is permanently open-aired, thus protecting the appliance from pressure increase.**
- ☑ **Extremely comfortable and useful at areas where the pressure varies.** They are operating well both at low and high pressure.
- ☑ **They have four-level protection, special mixing tap, external thermo-regulator, thermal cut-off and specially designed elliptic flange.**
- ☑ **Low heat losses**, due to the thick insulation from Freon- free polyurethane.
- ☑ **Long-life heating elements, manufactured at Eldominvest on state-of-the-art production line.** They are specially designed for these water heater models.



- ☑ Water tanks with special enamel covering. In this way, we guarantee the high water hygiene and its suitability for drinking purposes.
- ☑ Cathode corrosion protection: All models with enameled water tank have cathode protection through a protector made of special magnesium alloy.
- ☑ Lighting indications: for on/off position and for the heating mode for the Idea Mini models
- ☑ Modern and elegant outlook.

## 5, 10 and 15 liters Eldom Favorite Mini and Eldom Idea Mini models for under pressure operation



Low heat losses



Four-level protection



Drinking water



Combined return - safety valve



Option for assembly of anode tester



Environment friendly Freon free Polyurethane

- ☑ **Extremely assemble - easy.**
- ☑ Availability of **four-level protection - safety valve, external thermo-regulator, thermal cut-off and specially designed elliptic flange.**
- ☑ The models feature all the advantages of pressurized water heaters.
- ☑ Easily installed into kitchen furniture.
- ☑ We have reached **extremely low heat losses** for these models due to the thicker insulation of Freon-free polyurethane.
- ☑ **The first defense of the appliance is the multifunctional valve**, manufactured from special PBT plastics (poly-butylenes- teraftalates) which keeps the lime stone away. This combined valve provides these three functions at same time - of a safety, return and differential valve.
- ☑ **Lighting indications:** for on/off position and for the heating mode by Idea Mini models
- ☑ **We are manufacturing these models under a triple 100 percent quality control.**

		Favourite Mini		Idea Mini	Favourite Mini		Idea Mini	
		Free flow water heaters			Pressurized water heaters			
Model number	enamelled water tank	72324	72325	72325GD	72325P	72326P	72325GDP	72326GDP
	stainless steel water tank	72324H	72325H	72325GDH	72325HP	72326HP	72325GDHP	72326GDHP
Rated volume [l]		5	10	10	10	15	10	15
Rated voltage [V]		220-230 V~						
Rated power [kW]		1,5			2			
Rated pressure [MPa]		0			0,6			
Dimensions BxWxH [mm]		265x275x320	265x275x410	286x290x395	265x275x410	265x275x495	286x290x395	286x290x485
Weight [kg]	enamelled water tank	6,8	7,9	8,8	7,8	9,4	8,6	10,5
	stainless steel water tank	6,5	7,5	8,8	7,6	8,8	8,6	10
Warranty		3 years for the electrical part / 1 year for the accessories						

H - stainless P - pressure





## Instantaneous water heaters

Alpha and Beta, the first letters in Greek alphabet are the names of our instantaneous water heaters' ranges. We are offering them to our most impatient clients who expect hot water "Right now". The capability for assembly in rooms without hot water installation, the water flow and temperature control, easy installation and stylish outlook are just few of the advantages of Eldominvest's small instantaneous water heaters. Their construction contains components from leading European manufacturers-a guarantee for high quality and durability of the appliances.

We developed the following versions of instantaneous water heaters:

- ◆ Kitchen version;
- ◆ Bath version ;
- ◆ Combined version.

Our instantaneous water heaters are fully equipped and there is no need for additional mixing faucet and flexible hoses to be purchased.

*Eldom*  
**β**

## Never ending hot water

**Eldom β** is our instantaneous water heaters' core range. Developed in 3 versions: for kitchen, for bath and combined model.

**β models** have a hand-wheel for regulation of water flow and temperature, lighting four-stroke switch, providing the following operation regimes:

- ◆ Heating - only first heater is operating
- ◆ Heating - only second heater is operating
- ◆ Powerful heating - both heaters are operating
- ◆ Cold water without water heating.



## ADVANTAGES:

- ☑ **Stylish and functional accessories** a new winch, equipped with dispersion device is available
- ☑ Functional hand-wheel for water flow and temperature control, presence of STOP mode (inbuilt electronic stop valve).
- ☑ Compact outside dimensions
- ☑ Ergonomic features
- ☑ They are capable to operate in the households where the common single-phase current is available
- ☑ High protection rate
- ☑ Attractive purchase prices for end customers



Four-level protection



Mixing faucet



Drinking water



Bath accessories

	Instantaneous water heaters Eldom β				
Models	Eldom β3 72285B	Eldom β4 72485	Eldom β7 72486	Eldom β7 72486B	Eldom β7 72486C
Application	for sink	for sink	for sink	for bath	combined
Rated voltage [V]	220-230 V~				
Rated power [W]	3150	3500	6500		
Rated pressure [MPa]	0				
Rated pressure of the water in the water main [MPa]	0,2 - 0,8				
Dimensions HxWxB [mm]	298x195x134				
Weight [kg]	1,8	1,8	2	2,8	2,9
Warranty	2 years for the appliance				



Parameters	Eldom $\alpha$	Eldom $\beta$
Easy installation	√	√
Lighting indications	√	√
Stylish and functional accessories for bath models	√	√
Inbuilt Valve,regulating the water flow	√	√
<b>Protection levels :</b>		
Against electric current damage	√	√
Regulation of temperature interval of water heating	√	√
Protection against increase of set water temperature	√	
Protection against pressure fall down inside the main water supply – heating elements do not switch on	√	√
Protection against pressure going up thanks to special membrane valve installed	√	√
Filtering of incoming water and holding on of hard fractions	√	
Electric – magnet control of incoming water flow through special magnet -valve	√	

## Instantaneous water heaters



### Never ending hot water

The models of our luxury instantaneous water heaters line, besides all advantages of the core  $\beta$  line allow pre-setting the desired water temperature by means of an inbuilt thermal regulator. These models are well-provided for additional protection rates.

On front cover two functional hand-wheels are foreseen allowing fast and easy control.

— Hand- wheels for water flow and temperature control,

— Hand- wheels for choosing of operation mode with four positions: „STOP”, „Cold water regime”, „Heating regime” (only one heater is operating) and „Powerful heating regime” (both heaters are functioning).

#### ADVANTAGES:

- Preliminary setting of the desired water temperature.
- Seven - level protection.
- Two heating elements.
- Compact.
- Easy installation.
- No additional mixing faucet required.
- Ergonomic and elegant shape.
- Lighting indication „Ready” and „Heating”.
- Stylish and functional accessories.





CE

**BEAB**  
Approved



Seven-level protection



Mixing faucet



Drinking water



Bath accessories



External thermoregulator

	Instantaneous water heaters Eldom α				
Models	Eldom α6 72330	Eldom α6 72330B	Eldom α6 72330C	Eldom α8 72331	Eldom α8 72332
Application	for sink	for bath	combined	for bath	combined
Rated voltage [V]	220-230 V~				
Rated power [W]	6000			7500	
Rated pressure [MPa]	0				
Rated pressure of the water in the water main [MPa]	0,2 - 0,8				
Dimensions HxWxB [mm]	358x223x115				
Weight [kg]	2,5	3,3	3,4	3,3	3,4
Warranty	2 years for the appliance				



## Cookers

### The Big Small Cooker

#### *The Big Small Cooker*

We are the first Bulgarian manufacturer of cookers with glass-ceramic top. The electrical models have the class A energy efficiency.

The cookers, manufactured by Eldominvest, are very compact comparing to common models and have at same time **38 liters oven, the biggest one within the cookers of this class**. Their outside dimensions allow easy moving and utilization on balconies, in villas and kitchenettes with limited space. The cable with a socket is also included in the kit so no special mounting is required.

Our MINI cookers are available in following versions:

- \* Models 201V, 201VB electrical type, with glass ceramic top with two heating infrared zones, electric oven equipped with grill heating element;
- Models 203V, 203VB electrical type, with two cast-iron plates as the big one has fast heating feature, electric oven equipped with grill heating element;
- \* Model 211V combined type with glass-ceramic top with one infrared heating zone and one gas burner, electric oven equipped with grill heating element;
- \* Model 213V combined type one cast-iron heating plate and one gas burner, electric oven equipped with grill heating element;
- \* Model 311V combined type with glass-ceramic top with one heating infrared zone and one gas burner, gas oven;
- \* Model 313V combined type one cast-iron heating plate and one gas burner, gas oven;
- \* Model 314V is entirely on gas with gas burners and gas oven.





- ☑ Gas burners on top and mounted inside oven are universal. They are able to function with propane butane gas or with natural gas with respective pressure of 30 mbar and 20 mbar. The switch between propane butane to natural gas is very fast as the system remains hermetic all the time.
- ☑ All mini cooker models have in-built oven's lighting.



**36 months  
WARRANTY**



- \* Models with V option we are producing with INOX stainless steel tops and colored front elements.
- \* Models with E option we are producing with white enameled tops and colored front elements.
- \* Models with N option we are manufacturing with black enameled tops and colored front elements.
- \* Models with B option are with in-built fan for forced convection of oven.

TECHNICAL SPECIFICATIONS	201V, 201VE, 201VEN, 202V	203V, 203VE, 203VEN	201VB, 201VBE, 201VBEN, 202VB	203VB, 203VBE, 203VBEN	211V, 211VE, 211VEN, 212V	213V, 213VE, 213VEN	311V, 311VE, 311VEN, 312V	313V, 313VE, 313VEN	314V, 314VE, 314VEN
Rated voltage [V]	220 / 230 V~								
Rated power [W]	2950 / 3000	3230 / 3300	2950 / 3000	3230 / 3300	2950 / 3000	3230 / 3300	1550 / 1700	1845 / 2015	15
Rated power of the gas part [W]	-	-	-	-	1750	1750	3750	3750	4750
Radiant heater Ø180 mm [W]	1550 / 1700	-	1550 / 1700	-	1550 / 1700	-	1550 / 1700	-	-
Radiant heater Ø145 mm [W]	1100 / 1200	-	1100 / 1200	-	-	-	-	-	-
Cast-iron heating plate Ø180 mm [W]	-	1830 / 2000	-	1830 / 2000	-	1830 / 2000	-	1830 / 2000	-
Cast-iron heating plate Ø145 mm [W]	-	920 / 1000	-	920 / 1000	-	-	-	-	-
Oven heating element - top [W]	700 / 600	700 / 600	700 / 600	700 / 600	700 / 600	700 / 600	-	-	-
Oven heating element - bottom [W]	700 / 700	700 / 700	700 / 700	700 / 700	700 / 700	700 / 700	-	-	-
Grill heating element [W]	1100 / 1100	1100 / 1100	1100 / 1100	1100 / 1100	1100 / 1100	1100 / 1100	-	-	-
Volume of the oven [l]	35	35	35	35	35	35	38	38	38
Energy class	A	A	B	B	A	A			
Dimensions [mm]	390x560x502	390x560x502	390x560x600	390x560x600	420x560x510	420x560x510	420x560x520	420x560x520	420x560x520
Weight [kg]	24±0,5	25±0,5	26±0,5	27±0,5	25±0,5	26±0,5	26±0,5	26±0,5	25±0,5

B - built-in ventilator E - enameled cook tops



## BUILT-IN COOKTOPS

### BUILT-IN COOKTOPS

We are the first Bulgarian manufacturer of inbuilt cooktops, electrical, combined (gas and electricity) and entirely gas type. All elements used for electrical and gas parts, are manufactured by leading European suppliers, which improves the quality and durability of our appliances.

Manufactured hobs are in three variants:

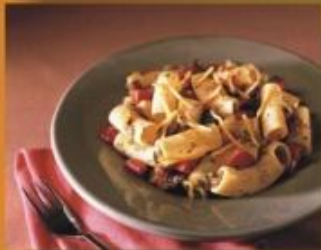
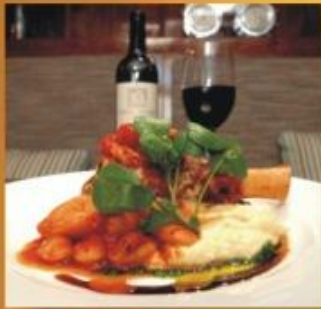
**PV 401** - with glass-ceramic top with two infrared heating zones.

\* You are able to save electric energy thanks to very fast heating and concentrating of heat only within on zones of the top

\* The temperature regulator provides six-level power control.

\* Inbuilt temperature cut-off protects the plate from over-heating and assures efficient operation regime.

\* The residual heat is indicated through small lamps.



**36 months  
WARRANTY**



**PVG 601** stainless steel top with two gas burners.



**PVK 701** glass-ceramic top with one electric heated infrared zone and one gas burner. The cook-top is equipped with a lamp for lighting indication of residual heat.

\* Inbuilt thermal regulator providing six-level power control.



Gas burners of inbuilt cooktops are universal. They are able to function with propane - butane gas or with natural gas with respective pressure of 30 mbar and 20 mbar. The switch between propane butane to natural gas is very fast as the system remains hermetic all the time.

Along with models which are to be built into kitchen operation tops, we are also manufacturing inbuilt cook tops suitable for marine use.

TECHNICAL SPECIFICATIONS		BUILT-IN COOKTOPS		
		PV 401	PVG 601	PVK 701
Rated voltage [V]		230 V~		
Rated capacity of the radiant heater	Ø180 mm [W]	1550 / 1700		1550 / 1700
Rated capacity of the radiant heater	Ø145 mm [W]	1100 / 1200	-	-
Rated capacity of the small gas burner [W]		-	1000	-
Rated capacity of the medium gas burner [W]		-	1750	1750
Dimensions [mm]	Depth	90	140	120
	Width	289	289	289
	Height	510	510	510
Installation opening in the kitchen tob [mm]		494 x 270		
Weight [kg]		5,0±0,1	5,5±0,1	5,5±0,1





## ELECTRICAL TUBULAR HEATING ELEMENTS MADE BY ELDOMINVEST

Being the biggest independent manufacturer of water heaters in Central Southeast Europe, we are in permanent necessity of bigger quantities of heating elements. For the sake of guaranteeing even a superior quality of our products and to be able to close the technological cycle, in 2009 we have opened a new factory for manufacturing of electrical tubular heating elements with various power, working voltage, purposes, shape and length (up to maximum 3 meters). The production capacity of the new generation line gives us the possibility to fully cover our own production program, as well as to perform a wide range of products according to customer's specific requests.

Due to the wide range of possibilities of the universe installation we are ready to face any specific request for production with a superior stage of technological flexibility:

\* Heating elements made of copper tubes, as well as stainless steel tubes made of various grade such as AISI 304, 304L, 321, 321S, 309S, 316S, 316L, 316T, INCOLOY 400 and INCOLOY 800.

\* Heating elements with various purposes: for heating of water, oil and air, as well as other chemical inactive gases and liquids. Applications:

Water heaters  
Electrical cookers and ovens  
Grill-heating elements for microwave ovens  
Washing machines

Drying machines  
Dish-washers  
Oil radiators  
Electrical boilers  
Industrial heating elements

\* We manufacture heating elements with working voltage 24V, 42V, 48V, 65V, 110V, 127V, 220V, 230V, 380V, 400V, 500V.

\* Heating elements with various ferrules;

\* Heating elements with mainly produced diameters of 6,3 and 8 mm.

\* Heating elements with various thickness of tubes;

- \* Heating elements with various shape of the flange;
- \* Heating elements with various geometry and bending corners, with minimum dimension of radiuses 12.5 mm.
- \* Heating elements protective nickel plating;
- \* We are also offering design and manufacture of heating elements as per specific customer's requests within short time.

What are the main features and advantages of our tubular heating elements?

1. Manufactured according to modern technology, allowing maximum automated control of processes. During the manufacturing process we perform 100 percent control at the following key manufacturing stages:

\* Quality control of tube welding using Eddy Current (test of Eddy Current);

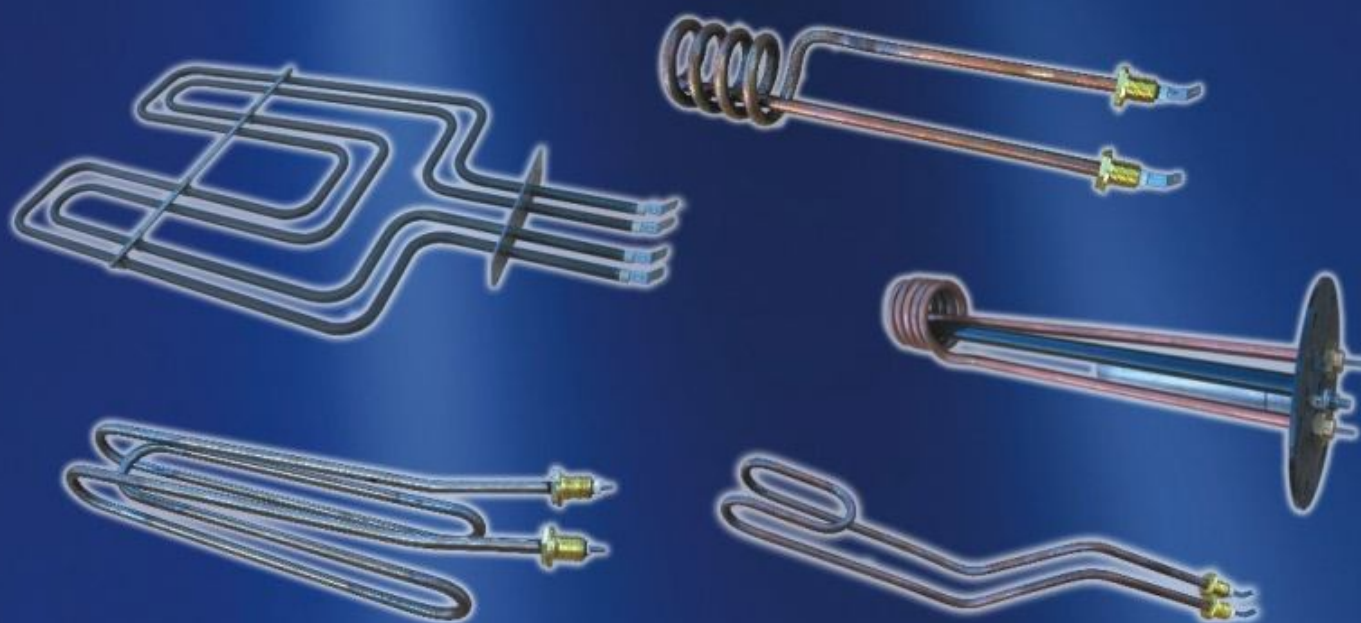
\* Quality control of the spiral welding to the terminal pin using automated control of parameters;

\* Test for di-electrical strength after filling before reduction of the tube diameter;

\* Quality control in water environment using sealing of the heating element;

\* Complete quality control on the final control stand, including: a second test for di-electrical strength, current leakage test, test of the heating element power;





2. All materials used are with guaranteed quality, supplied by leading companies. For the manufacturing process we use the following:

- \* The resistant leads are made of special chrome-nickel alloy of Kanthal. Our heating elements have been Designed to function with a minimum loading of the resistant spiral (the loading of the heating elements for water heaters is 20W/sq. sm.). The calculations for the parameters of the spirals are performed with a specially developed software, provided by Kanthal.
- \* The insulation is unexceptionable made of magnesium oxide (MgO) grade H with 99,97% pureness.
- \* The terminal pins are made of special carbon steel with nickel plating.
- \* For the sealing of the heating elements a special grade di-electric and non-flammable epoxy resin MC62 is used.
- \* Heating elements are equipped with ceramic insulation bushes, and not with the usually used plastic ones.
- \* The copper tubes used for the heating elements are calibrated with an extremely high level of accuracy (0,05 mm.) and are supplied by a German company.
- \* The stainless steel tubes are manufactured in Eldominvest Ltd. - grade AISI 321S is used in our appliances.

3. The heating elements which we produce for our appliances, are constructed with higher length and longer cold zone. In this way, despite of the higher consumption of expensive materials, we supply our customers heating elements with bigger resource, resisting even improper use of the relevant appliance, as well as resistant to limy water. In perspective point of view, practically these features will result in a minimum defectiveness rate, respectively warranty service costs for us, as well as for our consumers.

4. The highly automated production process of our tubular heating elements guarantees permanently high quality level and prevents from the possibility of human errors.

5. We propose a completely closed production cycle, allowing short production terms of industrial orders as well as of small lots of heating elements, consisting of the following key operations:

- \* Projects and design performed in our Technical Development section;
- \* Specific tools are produced in our own tool production mill, equipped with universe metal working stations with central programming devices.
- \* Pressing mill equipped with pressing machines up to 750 tones and cutting mill equipped with cutting machines for sheet material;
- \* Modern laboratory for verified testing processes.

6. And not last we are able to offer competitive price.

Although the technology for the production of electrical tubular heating elements has been recently implemented, these products already successfully resist the most important test they function flawlessly in our water heaters, which are in operation 24 hours per day, 365 days in the year.



## Technological opportunities of ELDOMINVEST



During all our 23 years of experience we have been continuously investing in improvement of our technological equipment and automation of our production processes. Thanks to this we have closed our production cycle and have reached an independency in our separate operations. For our production needs we supply only basic raw materials and components. All processes are within the plant starting from designing, production of instrumental equipment, cutting, deep drawing and precise laser cutting of steel sheets, casting of magnesium alloys and plastics, automatic welding of black and stainless steel, fluid and electrostatic powder enameling, powder coating, mounting and testing of ready appliances using apparatuses for final tests.

Being concentrated in process management and control, we can offer both high flexibility and short production terms.

We own a logistics company transporting our production all around Europe.

As a result of our long years of experience, our sophisticated equipment, own construction team, a plant for producing of instrumental equipment and testing laboratory we are able to manufacture products according to the specific requirements of our customers.





## Standards and certificates

All products of Eldominvest are certified according to the requirements of the following Directives: 2006/95/EC - Low Voltage Equipment and 2004/108/EC Electromagnetic Compatibility. Following the trends of using of energy saving systems on European and world markets and also the ECO Design Directive for energy efficiency of water heaters, we took and implemented some measures for additional extension of our product certificates. On the basis of used high-quality materials, innovative technologies and systems for optimization of the operational features, our company is able to manufacture products which entirely or partially utilize the energy coming from solar and heat pumping systems.

The parameters of our products entirely conform with the requirements of the European norms which came into force lately. These are the following standards:

### Standards for electrical water heaters:

- BDS EN 60335-1:2003 + A1:2005+A11:2005 standard for evaluation of compliance of electric equipment safety, part of Directive 2006/95/EC
- BDS EN 60335-2-21:2003+A1:2005 concerns the storage water heaters
- BDS EN 55014-1:2002+A1:2002
- BDS EN 55014-2:1999+A1:2002
- BDS EN 61000-3-3:2000 A group of standards concerning the electromagnetic compliance of products according to Directive 2004/108/EC

### The water heaters combined with heat exchanger meet the requirements of standards, different from these ones, applicable for electric water heaters:

- BDS EN 12897:2006 „Water-supply requirements for indirect heated water containers without ventilation (closed)“.
- BDS EN 60379:2005 „Methodology for measuring of parameters of water heaters for households, with electric heating elements“.

In order to guarantee the high quality of our products, we, at ELDOMINVEST own Quality Management System certified by SGS United Kingdom Ltd according to the International Standard ISO 9001:2000. We continuously support and improve our Quality Management System.

- ◆ All products, manufactured by us, have certificates for assessment of their compliance with the essential requirements of the EC Directives and European Council for electric equipment, designed for utilization within certain voltage limits and for electromagnetic compatibility, issued by SGS Bulgaria Ltd. The products are entitled to the **CE** mark.
- ◆ We have a certificate for an Approval according to Document 40 of BEAB approved factory for general assembly and testing of water heaters, issued by ASTA BEAB Certification Services and the right to use the BEAB mark for approved products.
- ◆ Our products, exported to Russia are certified for compliance with „ГОСТ Р“ certification system.
- ◆ ETL product sign for quality of INTER TESTING SERVICES for compliance of inbuilt glass-ceramic tops with the requirements of the American UI858 and the Canadian CAN/CSA-C22.2 standards.
- ◆ SEMKO allows marking our inbuilt glass-ceramic tops with CE sign for compliance with the requirements of LVD and EMC EC Directives and the European Council

We envisage in 2010 the re-certification of our implemented Quality Management System, according to the new version of ISO 9001 : 2008 Standard.



CH01







275 A Vladislav Varnenchik Blvd.

9009 Varna, Bulgaria

tel.: +359 52 500 349

fax: +359 52 500 347

e-mail: [mail@eldominvest.com](mailto:mail@eldominvest.com)

e-mail: [marketing@eldominvest.com](mailto:marketing@eldominvest.com)

[www.eldominvest.com](http://www.eldominvest.com)