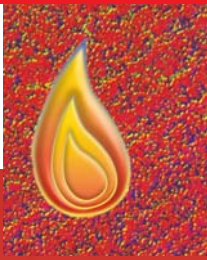


# EURO GSX SERIES



## HOT WATER AT WILL

Schools, hospitals, sports facilities, hotels – many scenarios require a wide availability of hot water in a short time.

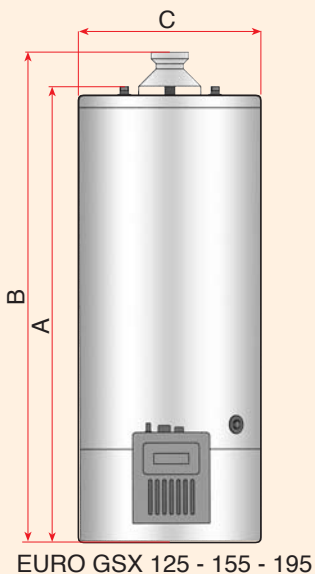
EURO GSX Idropi models are projected to cope flexibly with those who requires optimum performance and reliability. The capacity series combines economic use with a large supply of water.

The water heaters can be linked to large storage tanks or to other water heaters (in battery) avoiding very expensive installations. EURO GSX models are protected from corrosion by the glass lining of the tank at 860° C and by a large magnesium anode.

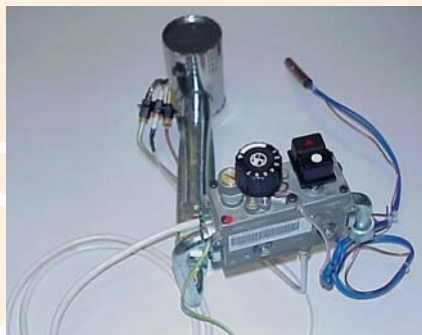
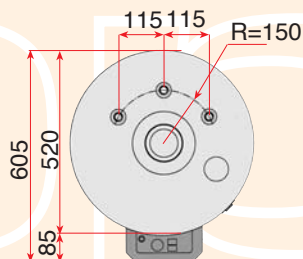
High quality performance is thanks to the well-considered dimension of the burner and combustion chamber as well as the special turbolator which guarantees the best thermic exchange improving combustion with the respect of the environmental pollution limits.

The thick CFC free polyurethane foam which surrounds the entire water heater tank provides optimal insulation and guarantees long lasting heating.

All models are equipped with a smoke thermostat which stops the gas outlet when the removing of the combustion smokes is irregular through the discharge pipe.



Gas group for EURO GSX 125 - 195



### MODELS

- EURO GSX 125
- EURO GSX 155
- EURO GSX 195

DIMENSIONS in mm	EURO GSX 125	EURO GSX 155	EURO GSX 195
A	1145	1315	1580
B	1240	1410	1710
C	520	520	520